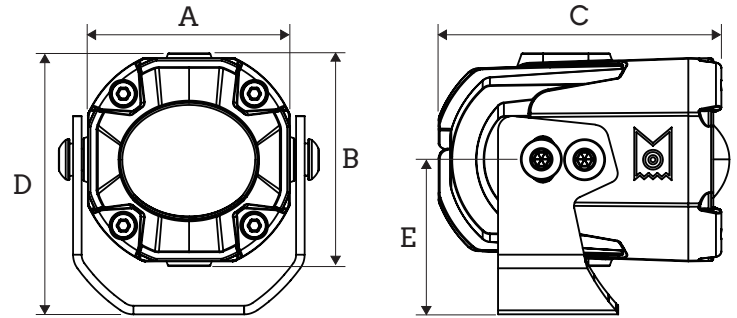




SPECIFICATIONS:

- Light Output: 2,000 Lumens (per light)
- Power: 20W (per light)
- Voltage: 12-48V DC
- Beam: Driving
- Dual Beam: White driving beam and yellow wide beam
- Color Temperature: 3,000K / 6,000K
- Stainless steel side and bottom brackets



A: 2" B: 2" C: 2-1/2"

D: 2-3/8" E: 1-1/2"



INCLUDED:

4114D

- 4X LED pods
- 4X U mount brackets
- Harness
- Mounting hardware

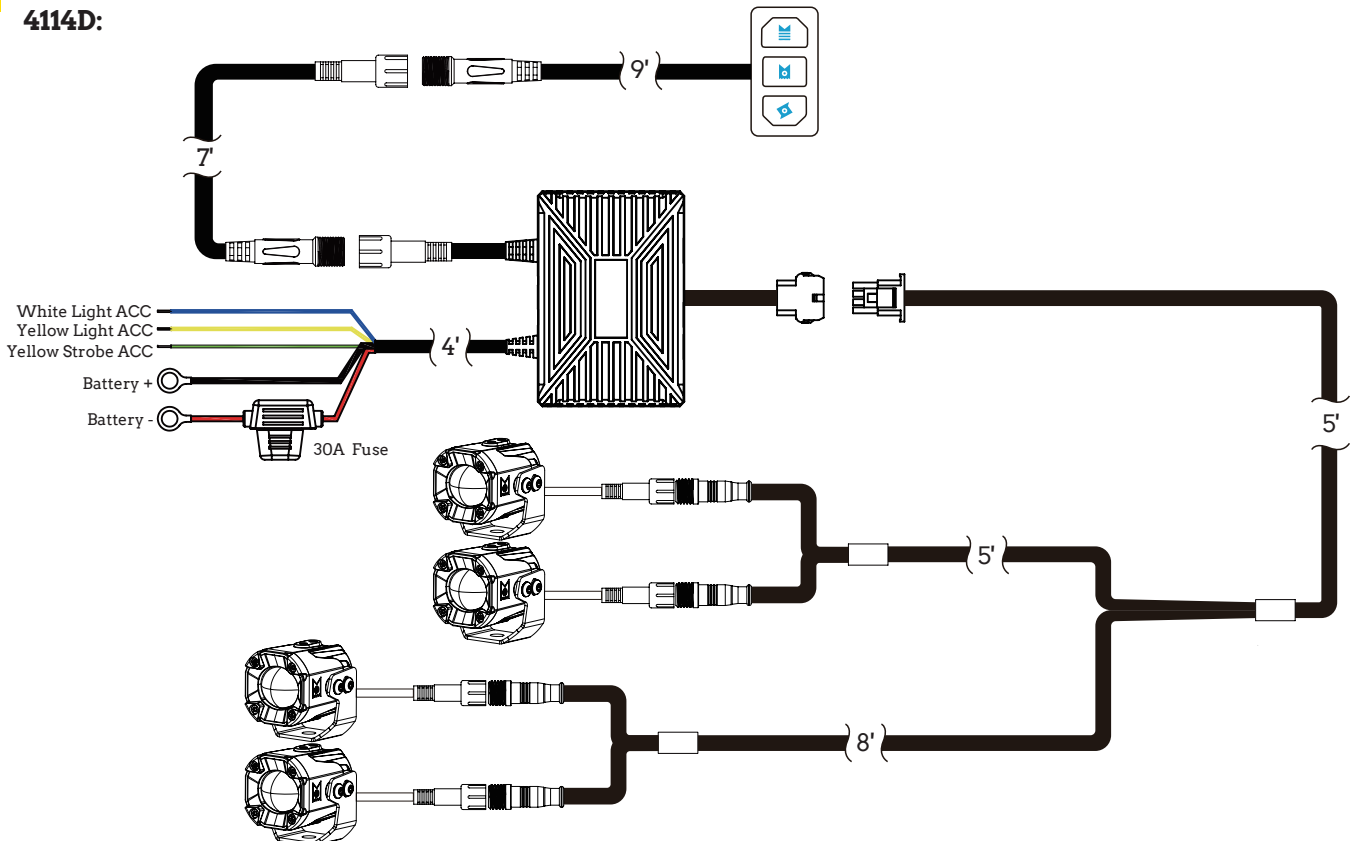
4116D

- 6X LED pods
- 6X U mount brackets
- Harness
- Mounting hardware

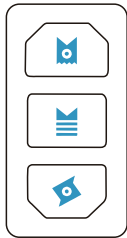
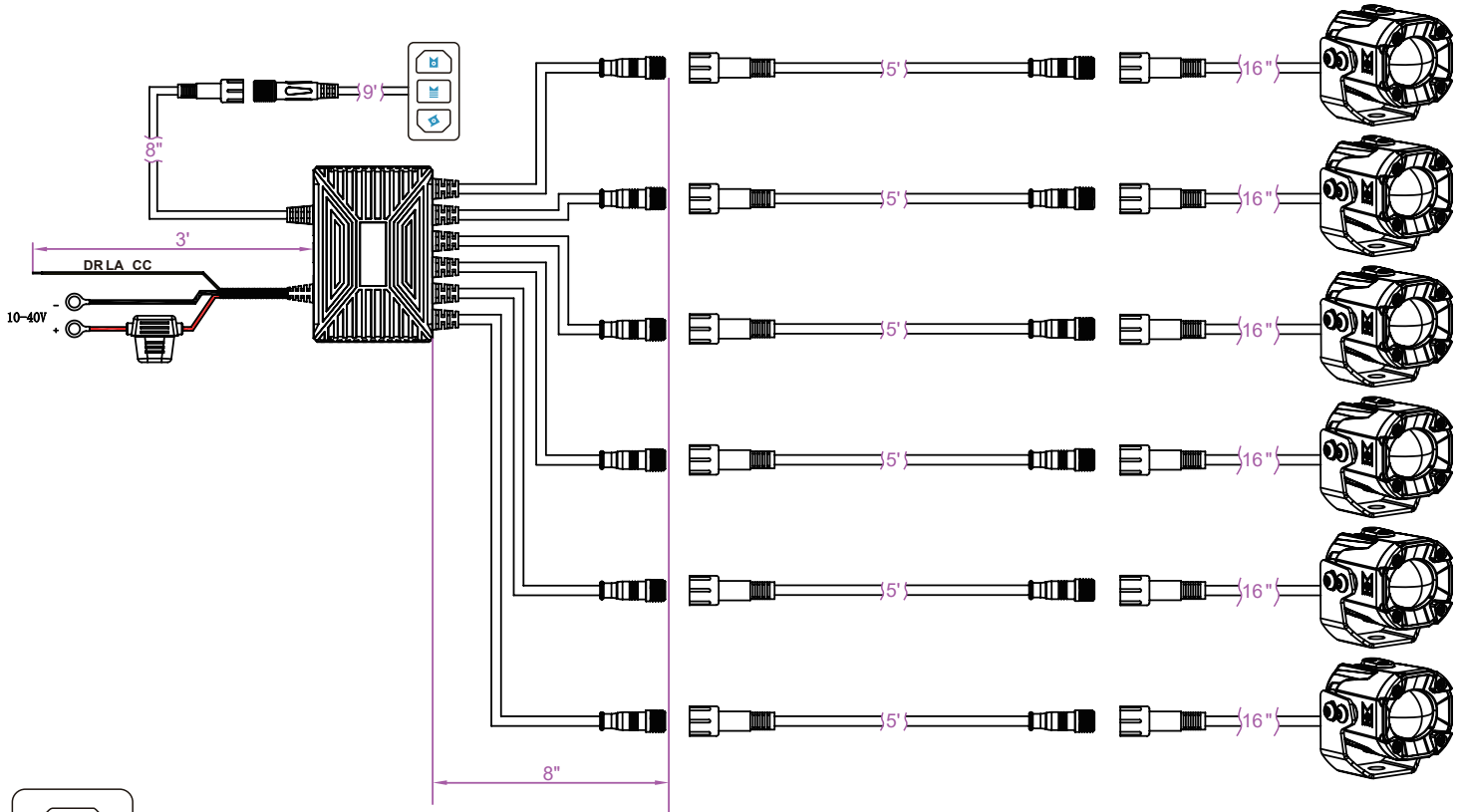


WIRING:

4114D:



4116D:



White Light On/Off
Yellow Light On/Off
Yellow Strobe On/Off/Select

- ① **The white light switch.** Press less than 1 second to turn the white light on or off. Press and hold to turn off the white light.
- ② **The yellow light switch.** Press less than 1 second to turn the white light on or off. Press and hold to turn off the yellow light.
- ③ **The yellow strobe light switch.** Press less than 1 second to turn the strobe light on, and press it again to switch to the next mode. Press and hold to turn off the strobe light. The sequence of modes will repeat as follows:

Mode 1	Mode 2	Mode 3	Mode 4	Mode 5	Mode 6
DRL	Hyper burst	Rapid strobe	Slow strobe	Staggered Sequential Burst	Alternating Rapid Burst

Memory function: When turning on the light, the last used mode will be recalled.

Tips:

- ① When the white light or yellow light is activated, turning on the strobe light will automatically deactivate the respective white light or yellow light.
- ② When white or yellow main light is on, turning on the other (yellow or white main light) dims both lights by 50%. Turning off one light restores the other to full power.
- ③ If using auxiliary switches instead of the provided switch, connect the ACC wires to power to enable the corresponding functions.



ARC LIGHTING
BASTROP, TEXAS 78602
UNITED STATES OF AMERICA
WWW.ARC.LIGHTING



⚠ WARNING: CANCER
AND REPRODUCTIVE HARM
WWW.P65WARNINGSCA.GOV