



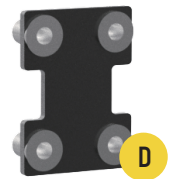
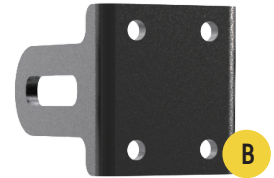
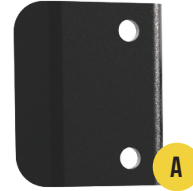
#9GCA3

CHEVROLET SILVERADO HD WT/LT/LTZ/HIGH COUNTRY BRACKET FOR 5" XTREME BAR



PART LIST

- A: 4x Side Front Plates
- B: 2x Middle Front Plates
- C: 4x Side Back Plates
- D: 2x Middle Back Plates
- E: 8x M4 Torx Head Screws
- F: 2x M4 Lock Washer
- G: 2x M4 Flat Washer
- H: 2x M8*6 Adaptor
- I: 2x M6*18 Hex Screw
- J: 2x M6 Flat Washer



REQUIRED TOOLS

- Security Torx L-Key(Included)
- M4 Hex Wrench(Included)
- M6 Hex Wrench(Not included)



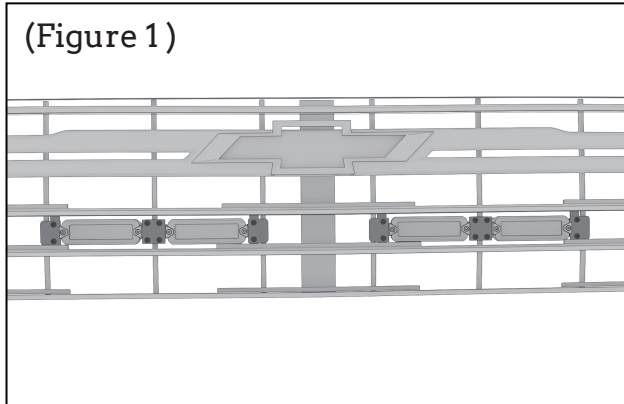
TECH NOTES

- No cutting or drilling is required for Tiny Monster Grille™ lights installation.
- Approximate install time: 20 minutes (not including harness installation)



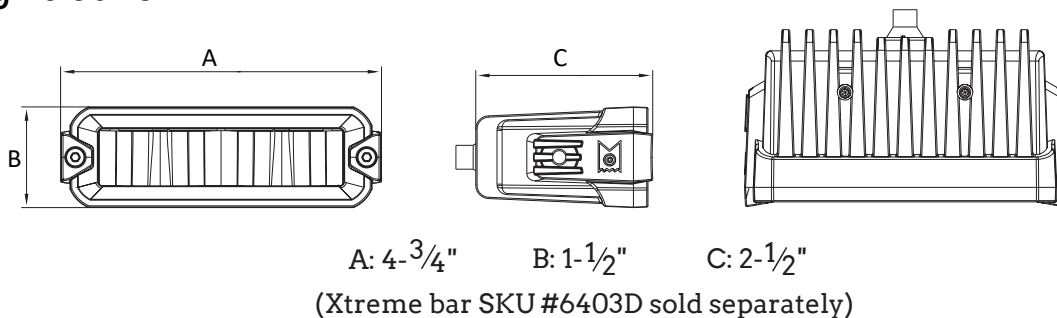
STEP 1 – PLAN THE INSTALL

Unbox the grille brackets and lay out all of the components. Determine where you want to install the lights on the grille. The bracket installation location can refer to Figure 1.



NOTES:

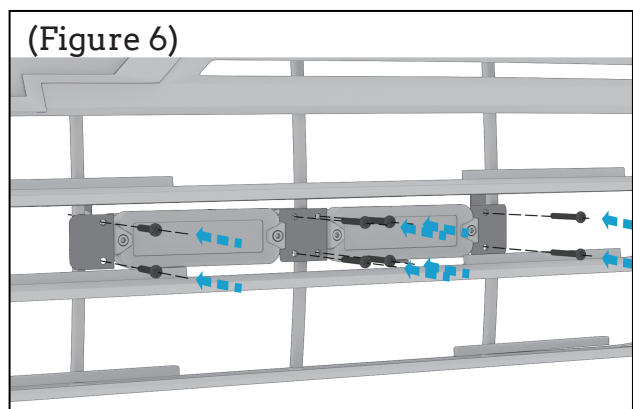
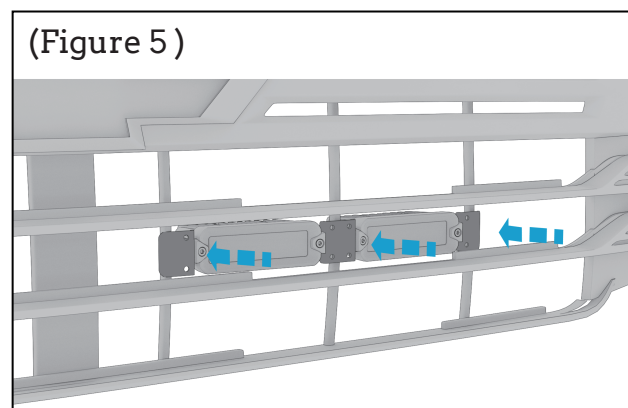
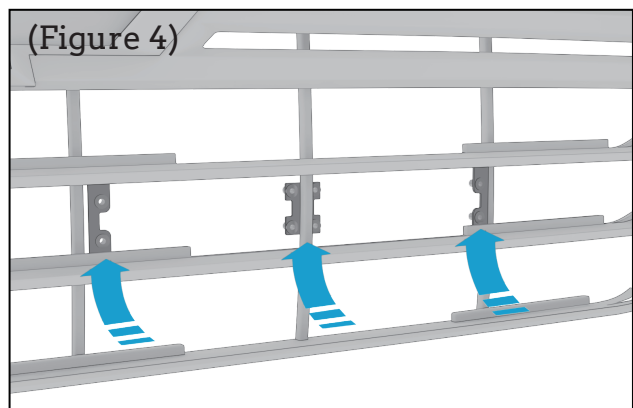
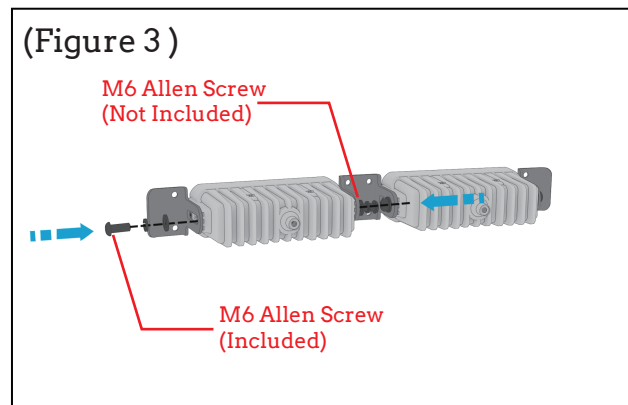
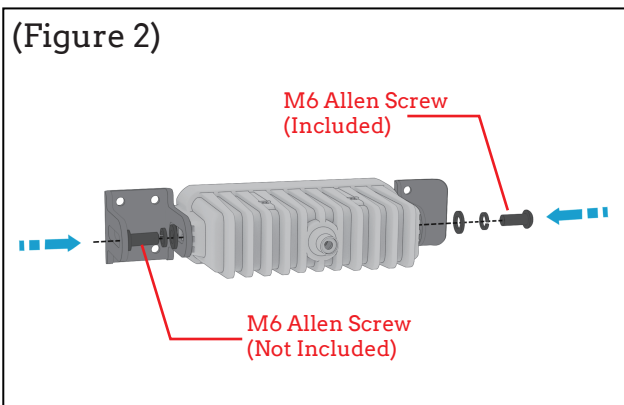
This bracket model fix to 5" xtreme bar, 6403D. one kit can install to 4 light bars.



STEP 2 – INSTALL THE GRILLE BRACKET + LIGHT

1. Couple one light with the middle front plate with a M6 hex screw(not included). Couple the light with a side front plate with the included M6hex screw.(Figure 2)
2. Couple the other light with the middle front plate with a M6 hex screw(not included). Couple the light with a side front plate with the included M6 hex screw.(Figure 3)
Note: When the lights is not long enough, you can use the adapters.
3. Hold the back plate to the rear of the grille hole/slot. (Figure 4)

4. Mount the light group to the installation location. (Figure 5)
4. Mount two side back plates to the light group with four(4) torx head screws. (Figure 6)
5. Mount the middle back plate with four(4) torx head screws. (Figure 6)



ARC LIGHTING
BASTROP, TEXAS 78602
UNITED STATES OF AMERICA
WWW.ARC.LIGHTING



⚠ WARNING: CANCER
AND REPRODUCTIVE HARM
WWW.P65WARNING.SCA.GOV