



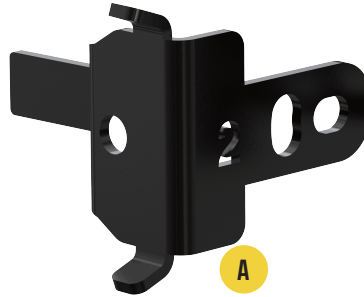
#9GCB6

CHEVROLET SILVERADO ZR2/ZR2 BISON  
BRACKET FOR CONCEPT POD MINI II

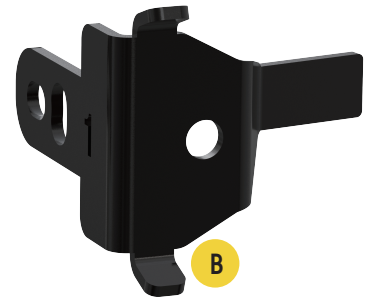


## PART LIST

- A: 4x No.1 Front Plates
- B: 4x No.2 Front Plates
- C: 8x Back Plates
- D: 8x M4 Torx Head Screws
- E: 8x M4 Lock Washer



A



B



C



D



E



## REQUIRED TOOLS

- Security Torx L-Key(Included)
- M5 HexWrench(Not Included)



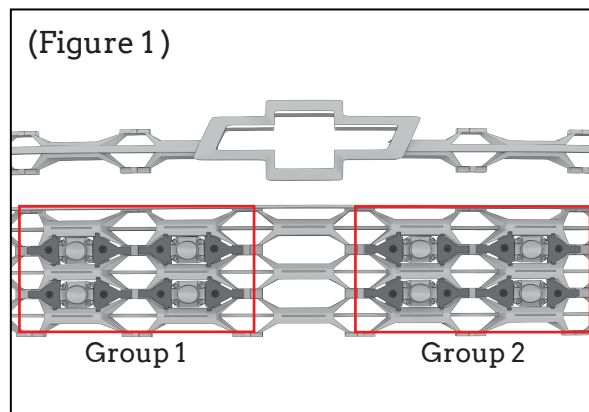
## TECH NOTES

- No cutting or drilling is required for Tiny Monster Grille™ lights installation.
- Approximate install time: 20 minutes (not including harness

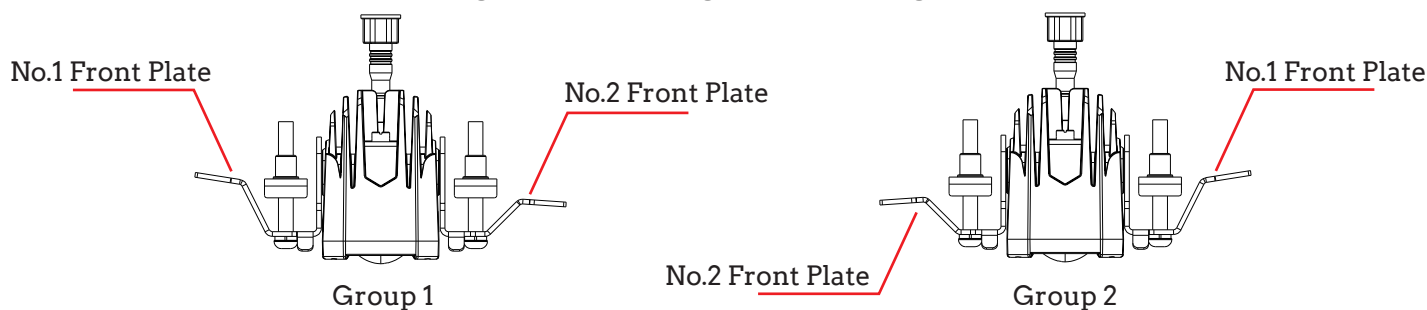


## STEP 1 – PLAN THE INSTALL

Unbox the grille brackets and lay out all of the components. Determine where you want to install the lights on the grille. This grille can link up to 8 lights. The bracket installation location can refer to Figure 1.



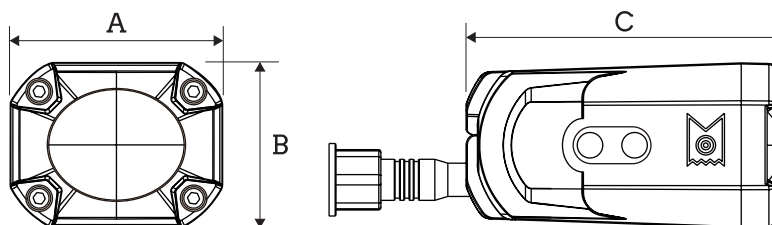
Note: The front plates positions of Group 1 and Group 2 are different. Please install according to the diagram in Figure 2.



(Figure 2)

## NOTES:

This bracket model fix to concept pod mini II. one bracket kit can install to 4 lights.



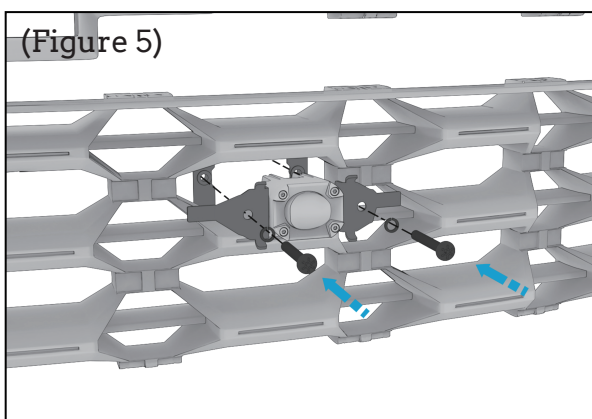
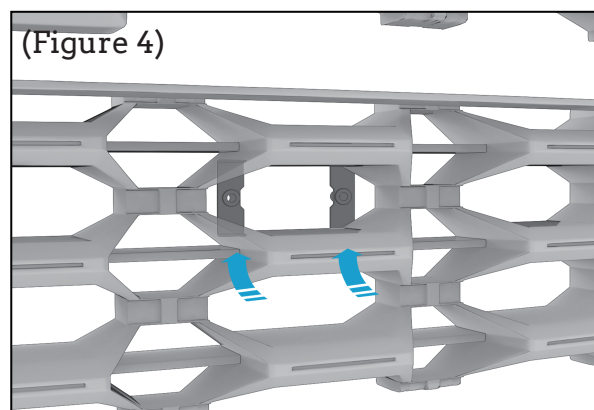
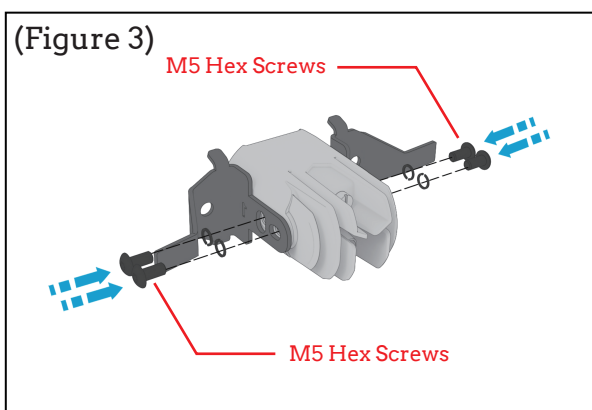
A: 2"    B: 1-1/2"    C: 3"

(Concept Pod Mini II, SKU #4124D/4128D sold separately)



## STEP 2 – INSTALL THE GRILLE BRACKET + LIGHT

1. Mount the front plates with four(4) M5 hex screws. (Figure 3)  
Note: Please install the front plate to right position according to the figure 2.
2. Put the back plate at the back of the grille. (Figure 4)
3. Mount the lights to the back plates with two(2) torx head screws. (Figure 5)



**ARC LIGHTING**  
BASTROP, TEXAS 78602  
UNITED STATES OF AMERICA  
[WWW.ARC.LIGHTING](http://WWW.ARC.LIGHTING)



⚠ WARNING: CANCER  
AND REPRODUCTIVE HARM  
[WWW.P65WARNING.CA.GOV](http://WWW.P65WARNING.CA.GOV)