



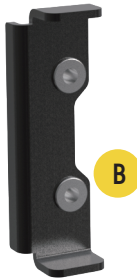
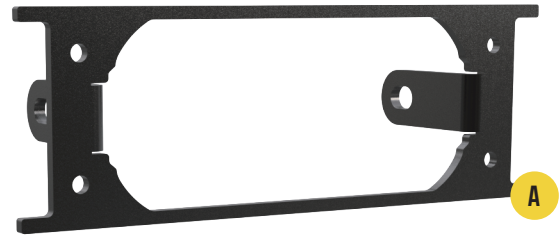
#9GF21

FORD F-150 LARIAT 2021-2023  
GRILLE BRACKET FOR 4" XTREME BAR



## PART LIST

- A: 2x Front Plates
- B: 4x Back Plates
- C: 8x M4 Torx Head Screws
- D: 8x M4 Lock Washer



## REQUIRED TOOLS

- Security Torx L-Key(Included)
- M6 Hex Wrench(Not included)



## TECH NOTES

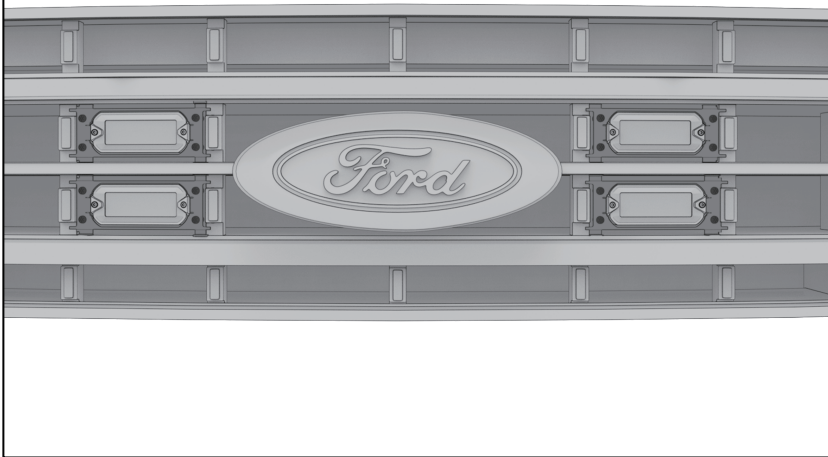
- No cutting or drilling is required for Tiny Monster Grille™ lights installation.
- Approximate install time: 20 minutes (not including harness installation)



## STEP 1 – PLAN THE INSTALL

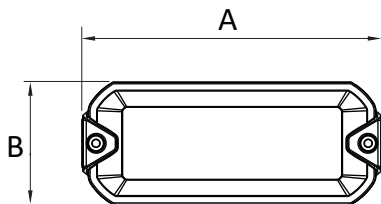
Unbox the grille brackets and lay out all of the components. Determine where you want to install the lights on the grille. This grille can install up to 4 lights. The bracket installation location can refer to Figure 1.

(Figure 1)

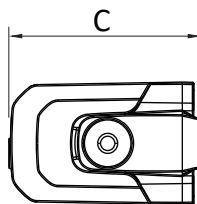


### NOTES:

This bracket model fix to 4" xtreme bar, 6401D/6401F. one bracket kit can install to 2 light bars.

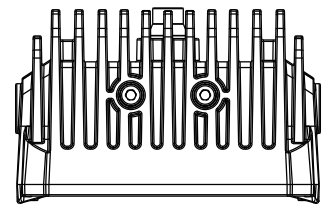


A: 4"



B: 1-1/2"

C: 2-1/2"

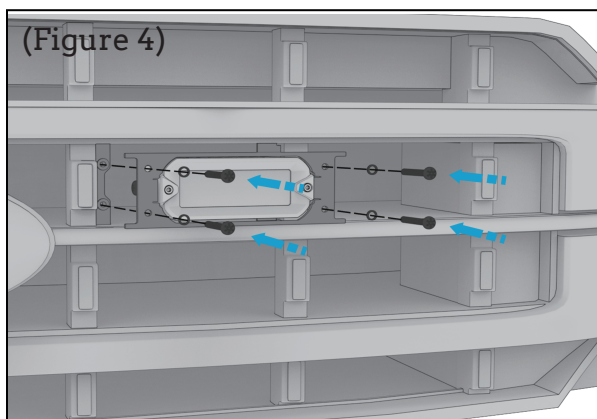
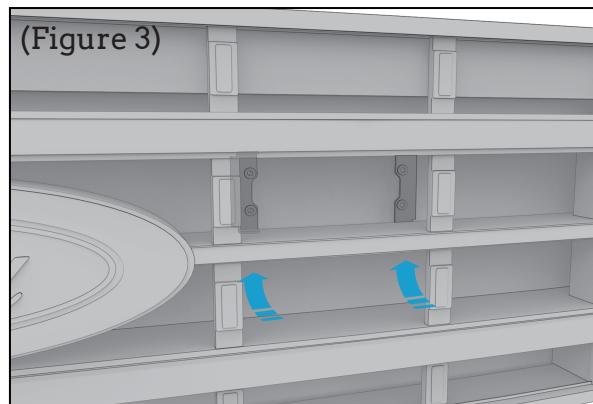
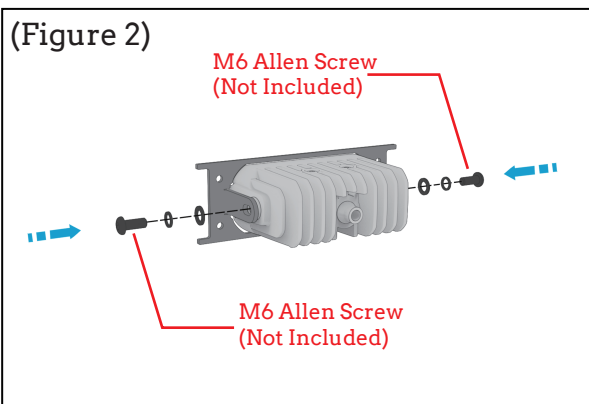


(Xtreme bar SKU #6401D/6401F sold separately)



## STEP 2 – INSTALL THE GRILLE BRACKET + LIGHT

1. Mount the light to the front plate with two(2) M6 hex screws. (Figure 2)
2. Put the back plate at the back of the grille. (Figure 3)
3. Mount the lights to the back plates with four(4) torx head screws. (Figure 4)



**ARC LIGHTING**  
BASTROP, TEXAS 78602  
UNITED STATES OF AMERICA  
[WWW.ARC.LIGHTING](http://WWW.ARC.LIGHTING)



⚠ WARNING: CANCER  
AND REPRODUCTIVE HARM  
[WWW.P65WARNING.SCA.GOV](http://WWW.P65WARNING.SCA.GOV)