



#9GFC3

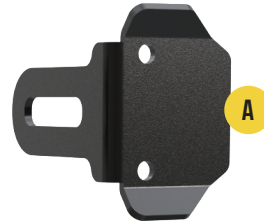
FORD F-150 XL 2024

GRILLE BRACKET FOR 5" XTREME BAR



PART LIST

- A: 4x Front Plates
- B: 4x Back Plates
- C: 4x M4 Torx Head Screws
- D: 4x M4 Lock Washer
- E: 4x M4 Flat Washer



REQUIRED TOOLS

- Security Torx L-Key(Included)
- M6 Hex Wrench(Not included)



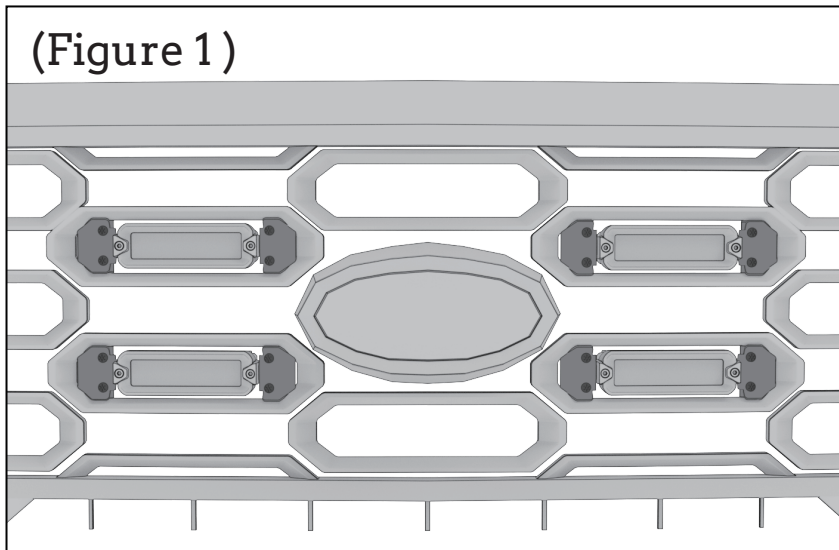
TECH NOTES

- No cutting or drilling is required for Tiny Monster Grille™ lights installation.
- Approximate install time: 20 minutes (not including harness installation)



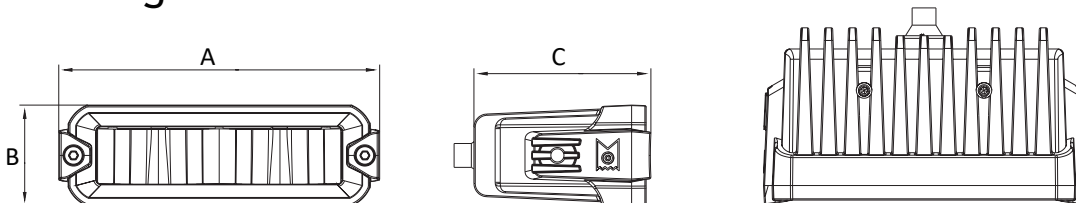
STEP 1 – PLAN THE INSTALL

Unbox the grille brackets and lay out all of the components. Determine where you want to install the lights on the grille. This grille can install up to 4 lights. The bracket installation location can refer to Figure 1.



NOTES:

This bracket model fix to 5" xtreme bar, 6403D. one kit can install to 2 light bars.



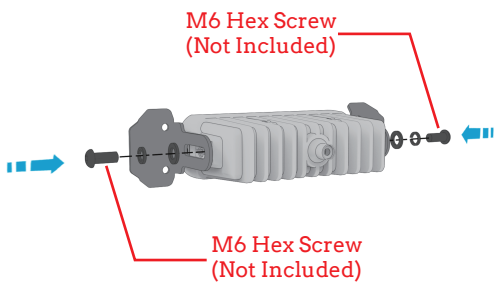
A: 4- $\frac{3}{4}$ " B: 1- $\frac{1}{2}$ " C: 2- $\frac{1}{2}$ "
(Xtreme bar SKU #6403D sold separately)



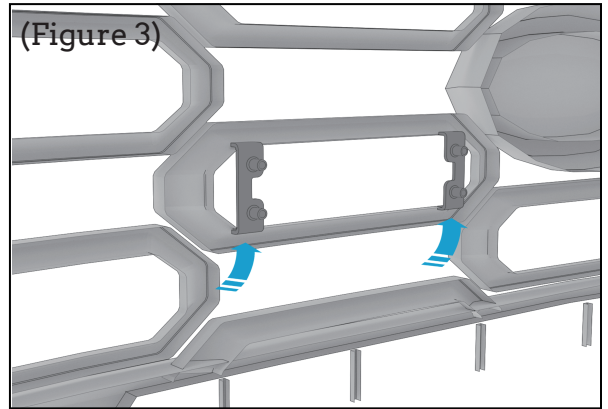
STEP 2 – INSTALL THE GRILLE BRACKET + LIGHT

1. Mount the light to the front plate with two(2) M6 hex screws. (Figure 2)
2. Put the back plate at the back of the grille. (Figure 3)
3. Mount the lights to the back plates with four(4) torx head screws. (Figure 4)

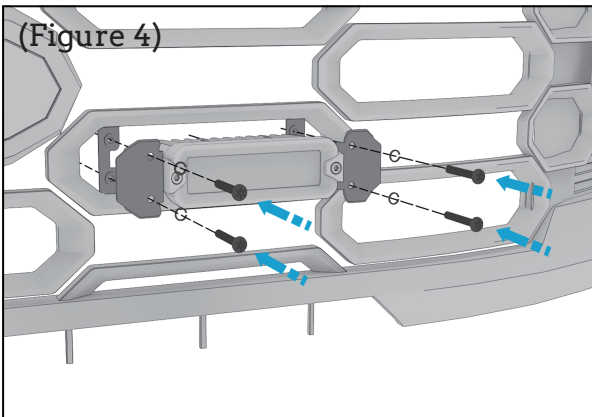
(Figure 2)



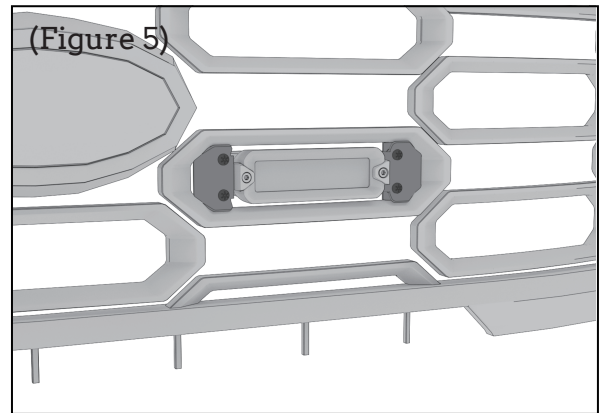
(Figure 3)



(Figure 4)



(Figure 5)



ARC LIGHTING
BASTROP, TEXAS 78602
UNITED STATES OF AMERICA
WWW.ARC.LIGHTING



⚠ WARNING: CANCER
AND REPRODUCTIVE HARM
WWW.P65WARNING.SCA.GOV