



#9GFD3

FORD F-150 XLT 2024 GRILLE
BRACKET FOR 5" XTREME BAR

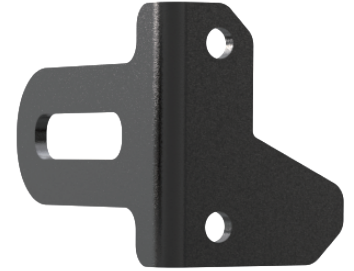


PART LIST

- A: 2x No.1 Front Plates
- B: 2x No.2 Front Plates
- C: 4 x Back Plates
- D: 8x M4 Torx Head Screws
- E: 8x M4 Lock Washer
- F: 8x M4 Flat Washer



A



B



C



D



E



F



REQUIRED TOOLS

- Security Torx L-Key(Included)
- M6 HexWrench(Not Included)



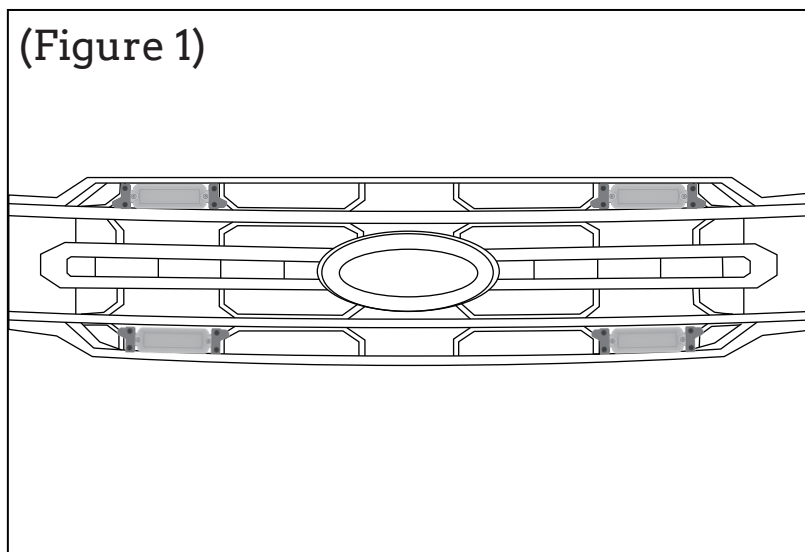
TECH NOTES

- No cutting or drilling is required for Tiny Monster Grille™ lights installation.
- Approximate install time: 20 minutes (not including harness installation)



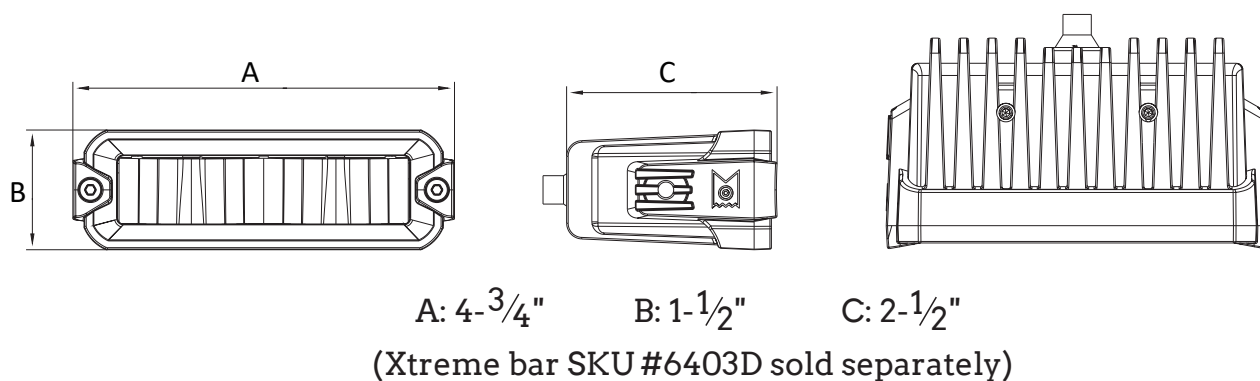
STEP 1 – PLAN THE INSTALL

Unbox the grille brackets and lay out all of the components. Determine where you want to install the lights on the grille. The bracket installation location can refer to Figure 1.



NOTES:

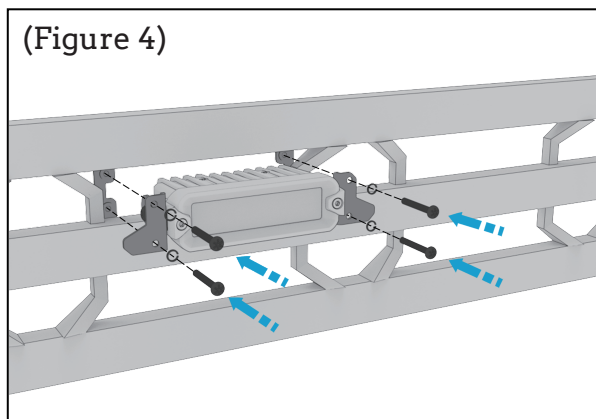
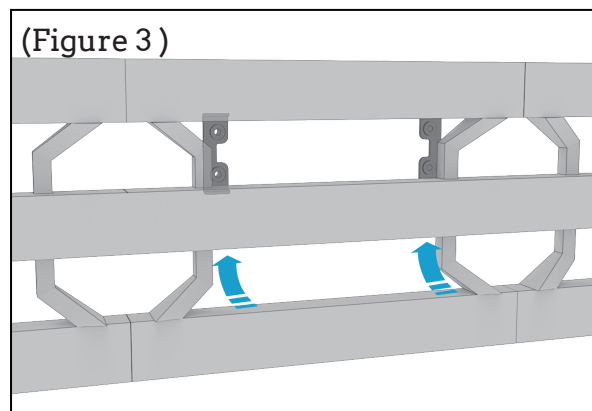
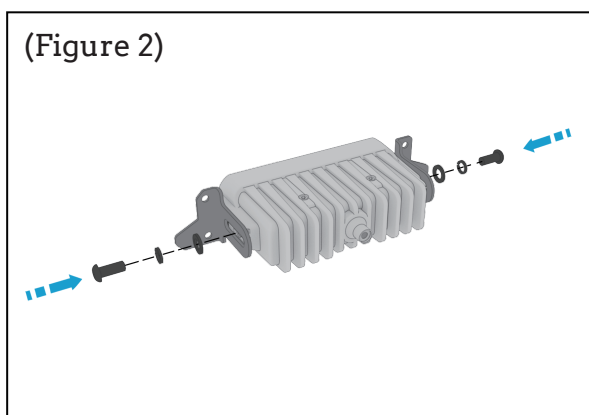
This bracket model fix to 5" xtreme bar, 6403D. one kit can install to 2 light bars.





STEP 2 – INSTALL THE GRILLE BRACKET + LIGHT

1. Mount the front plates with two(2) M6 hex screws. (Figure 2)
2. Put the back plate at the back of the grille. (Figure 3)
3. Mount the lights to the back plates with four(2) torx head screws. (Figure 4)



ARC LIGHTING
BASTROP, TEXAS 78602
UNITED STATES OF AMERICA
WWW.ARC.LIGHTING



⚠ WARNING: CANCER
AND REPRODUCTIVE HARM
WWW.P65WARNINGS.CA.GOV