



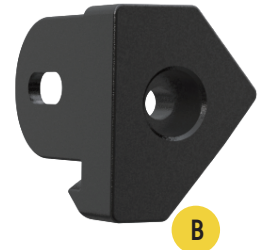
#9GTD8

SILVERADO 1500 WT/LT/LTZ/HIGH COUNTRY 2024  
GRILLE BRACKET FOR 3" DRIVING LIGHTS



## PART LIST

- A: 8x Front Left Plates
- B: 8x Front Right Plates
- C: 8x Back Left Plates
- D: 8x Back Right Plates
- E: 16x M4 Torx Head Screws
- F: 16x M4 Lock Washer
- G: 16x M4 Flat Washer



## REQUIRED TOOLS

- Security Torx L-Key(Included)
- M6 Hex Wrench(Not included)



## TECH NOTES

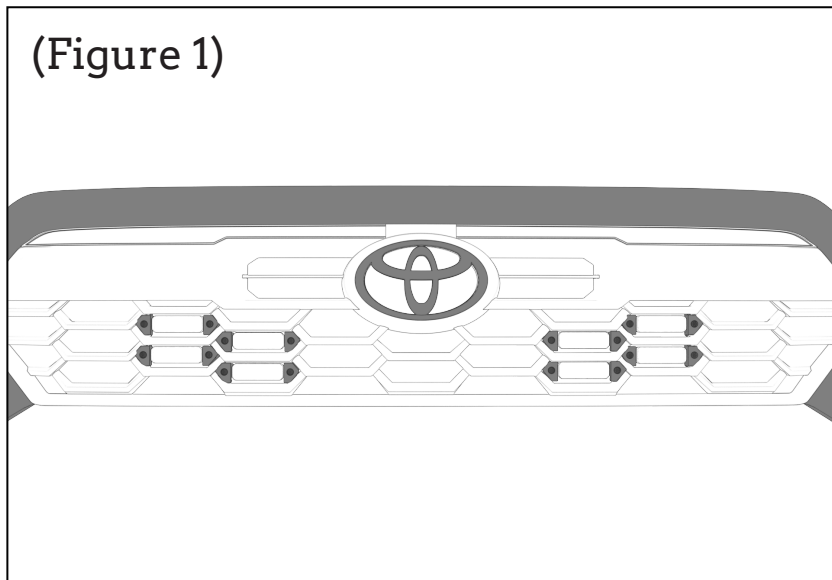
- No cutting or drilling is required for Concept Grille™ lights installation.
- Approximate install time: 20 minutes (not including harness installation)



## STEP 1 – PLAN THE INSTALL

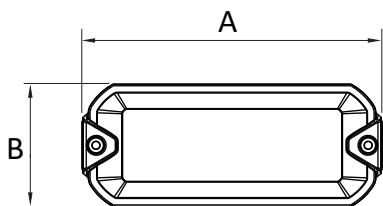
Unbox the grille brackets and lay out all of the components. Determine where you want to install the lights on the grille. This grille can install up to 8 lights. The bracket installation location can refer to Figure 1.

(Figure 1)

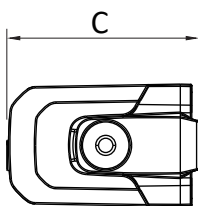


### NOTES:

This bracket model fix to 3" xtreme bar pro, 4138D. one bracket kit can install to 8 light bars.

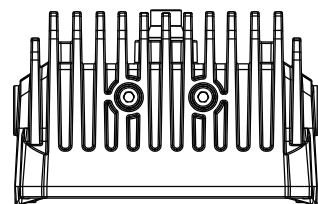


A: 4"



B: 1-1/2"

C: 2-1/2"

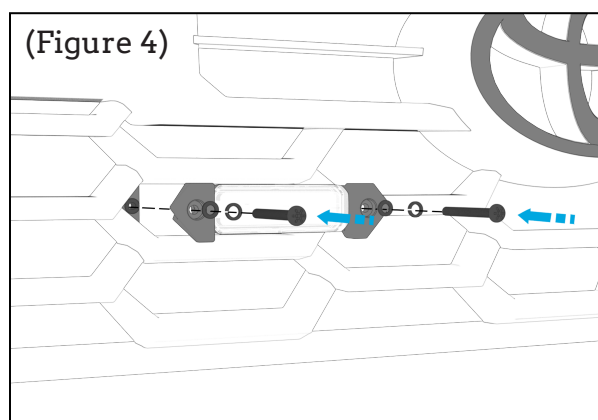
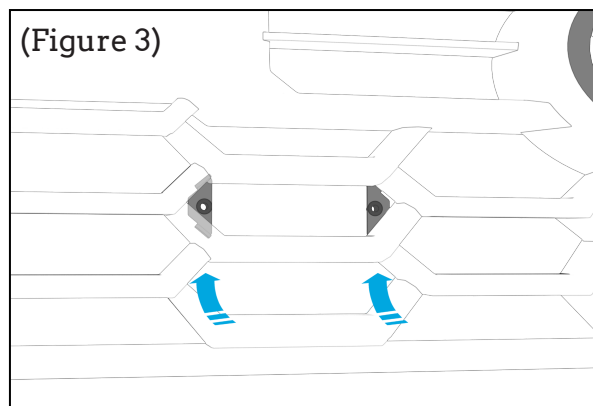
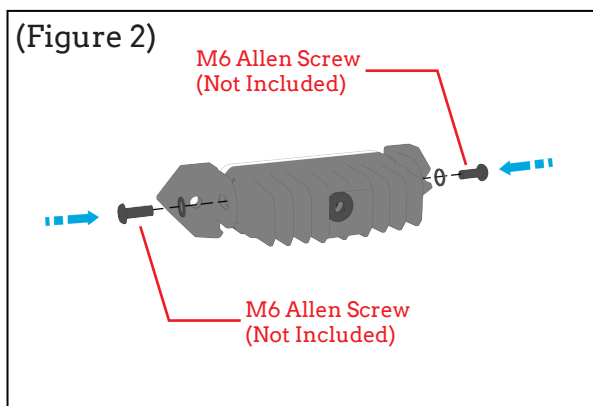


(Xtreme bar pro SKU #4138D sold separately)



## STEP 2 – INSTALL THE GRILLE BRACKET + LIGHT

1. Mount the light to the front plate with two(2) M6 hex screws. (Figure 2)
2. Put the back plate at the back of the grille. (Figure 3)
3. Mount the lights to the back plates with two(2) torx head screws. (Figure 4)



**ARC LIGHTING**  
BASTROP, TEXAS 78602  
UNITED STATES OF AMERICA  
[WWW.ARC.LIGHTING](http://WWW.ARC.LIGHTING)



⚠ WARNING: CANCER  
AND REPRODUCTIVE HARM  
[WWW.P65WARNINGS.CA.GOV](http://WWW.P65WARNINGS.CA.GOV)